

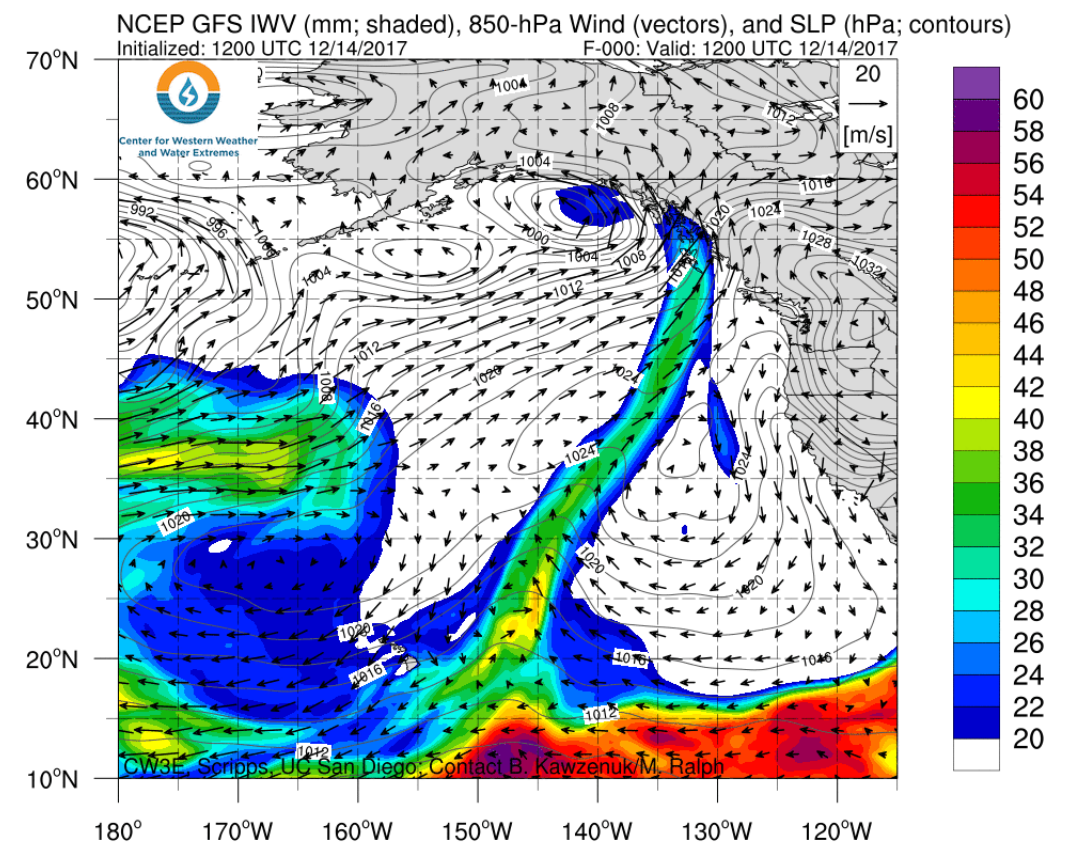
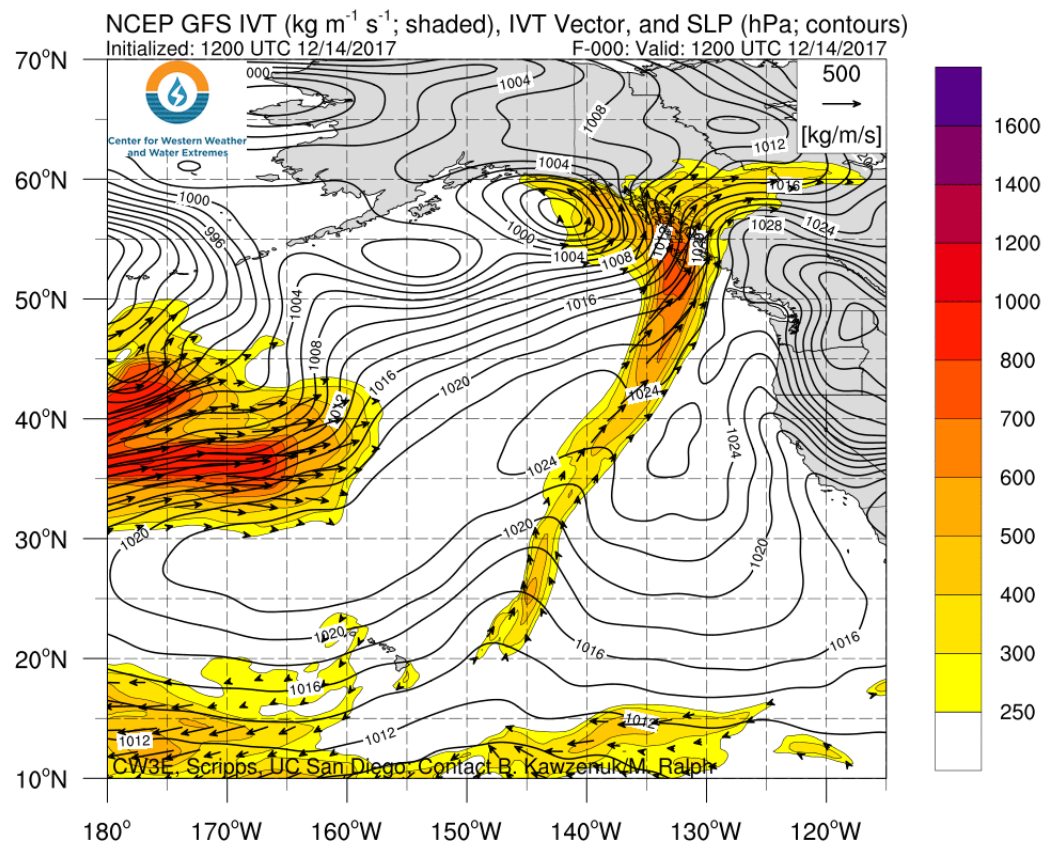
CW3E Atmospheric River Outlook – Ridge Update



Center for Western Weather
and Water Extremes
SCRIPPS INSTITUTION OF OCEANOGRAPHY
AT UC SAN DIEGO

Dry Conditions Expected to Persist over CA for the Foreseeable Future

- Persistent high pressure and ridging over the northeast Pacific and USWC is directing moisture transport towards AK and resulting in long periods of dry conditions over the USWC
- The lack of precipitation over the southern USWC is increasing Drought conditions and has resulted in the Northern Sierra 8-station index dropping below normal accumulations to date
- While ridging is forecast to persist, AR conditions are currently forecast to impact the West Coast but the unfavorable north/northwesterly orientation of IVT will result in little or no precipitation over CA



Ridge Update: 14 December 17

For California DWR's AR Program



Center for Western Weather
and Water Extremes
SCRIPPS INSTITUTION OF OCEANOGRAPHY
AT UC SAN DIEGO

U.S. Drought Monitor West

December 12, 2017

(Released Thursday, Dec. 14, 2017)

Valid 7 a.m. EST

Drought Conditions (Percent Area)

	None	D0-D4	D1-D4	D2-D4	D3-D4	D4
Current	48.48	51.52	25.17	3.94	1.52	0.00
Last Week 12-05-2017	59.75	40.25	24.59	3.94	1.52	0.00
3 Months Ago 09-12-2017	53.28	46.72	24.11	9.34	6.18	3.22
Start of Calendar Year 01-01-2017	54.19	45.81	21.51	8.53	5.11	2.44
Start of Water Year 09-26-2017	55.72	44.28	21.01	8.72	5.30	2.17
One Year Ago 12-13-2016	43.15	56.85	25.99	10.03	5.73	2.81

Intensity:

Yellow	D0 Abnormally Dry	Red	D3 Extreme Drought
Orange	D1 Moderate Drought	Dark Red	D4 Exceptional Drought
Dark Orange	D2 Severe Drought		

The Drought Monitor focuses on broad-scale conditions.
Local conditions may vary. See accompanying text summary
for forecast statements.

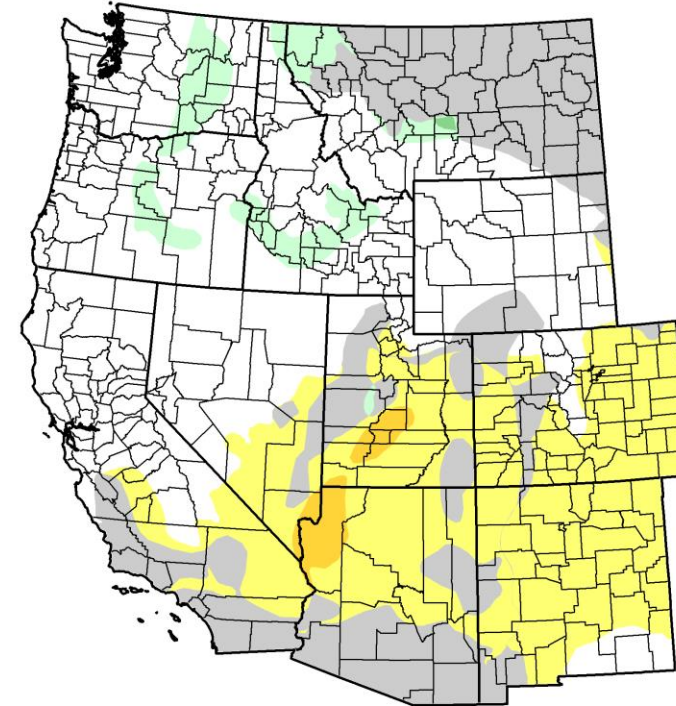
Author:

Jessica Blunden
NCEI/NOAA



<http://droughtmonitor.unl.edu/>

U.S. Drought Monitor Class Change - West 1 Month



Brown	5 Class Degradation
Dark Orange	4 Class Degradation
Orange	3 Class Degradation
Yellow	2 Class Degradation
Light Yellow	1 Class Degradation
Grey	No Change
Light Green	1 Class Improvement
Green	2 Class Improvement
Dark Green	3 Class Improvement
Teal	4 Class Improvement
Blue	5 Class Improvement

December 12, 2017
compared to
November 14, 2017

<http://droughtmonitor.unl.edu>

The latest US Drought Monitor Index indicates that southern California, Arizona, southern Nevada, and Utah are under Abnormally dry to Moderate Drought conditions.

The absence of precipitation over the southern US West Coast since November has resulted in 1–2 drought class degradations over portions of southern CA, AZ , NV, and UT.

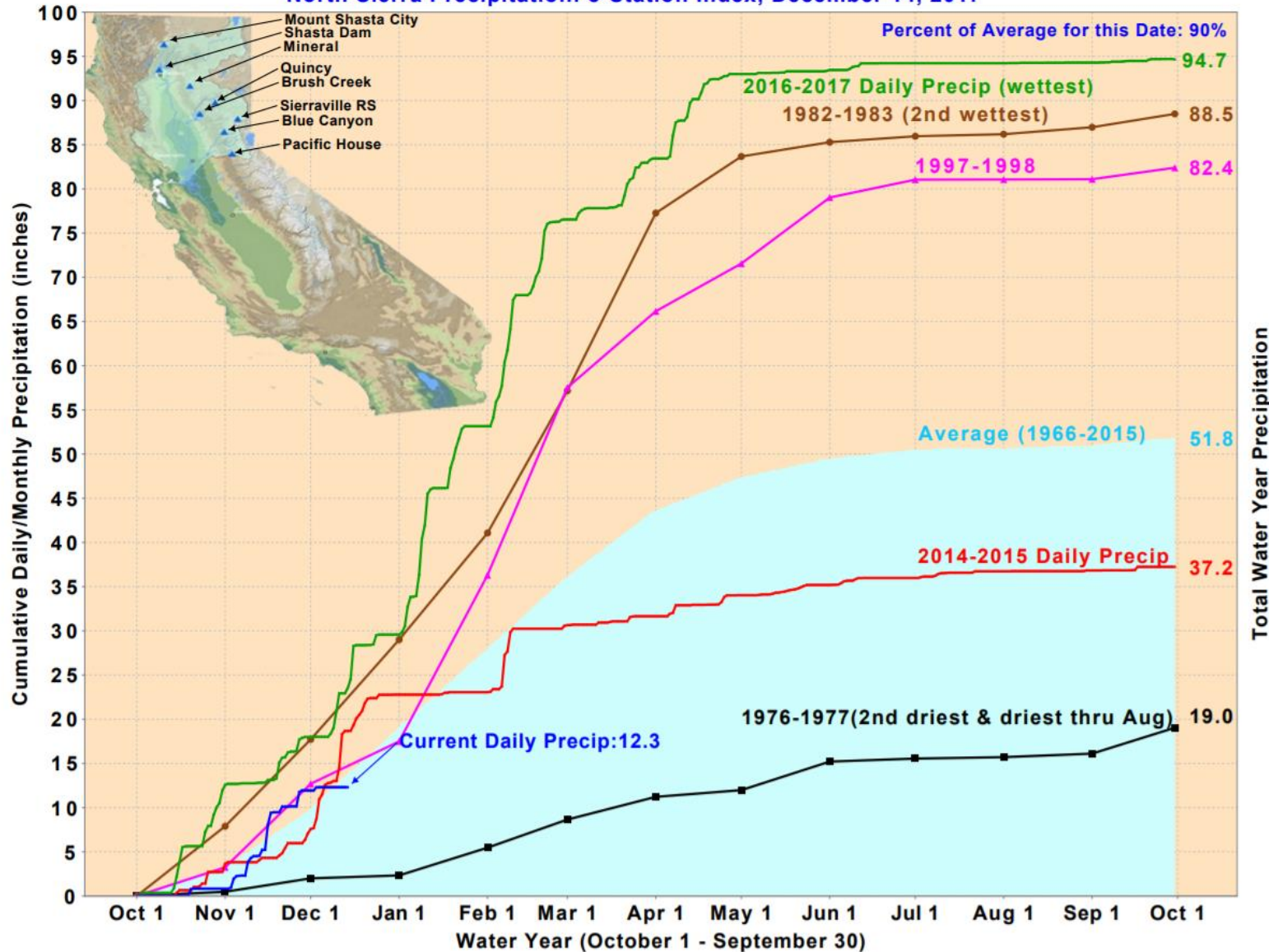
Ridge Update: 14 December 17

For California DWR's AR Program



Center for Western Weather
and Water Extremes
SCRIPPS INSTITUTION OF OCEANOGRAPHY
AT UC SAN DIEGO

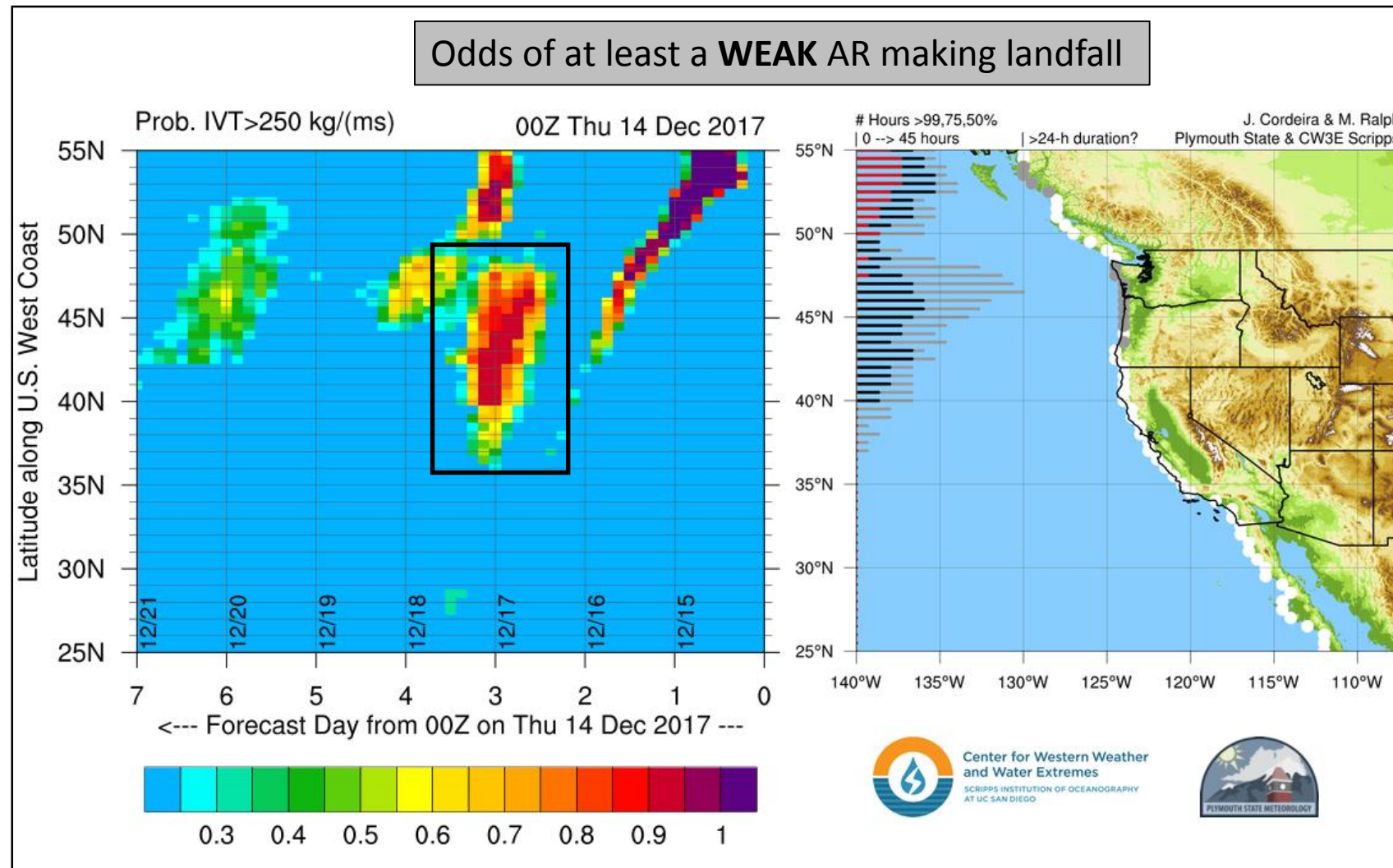
North Sierra Precipitation: 8-Station Index, December 14, 2017



The Northern Sierra 8-station precipitation index was above normal through mid November after multiple ARs made landfall in late October and November

Due to the lack of AR landfall driven by the persistent high pressure and ridging since mid to late November, the 8-station index has dropped to 90% of average precipitation to date (below average)

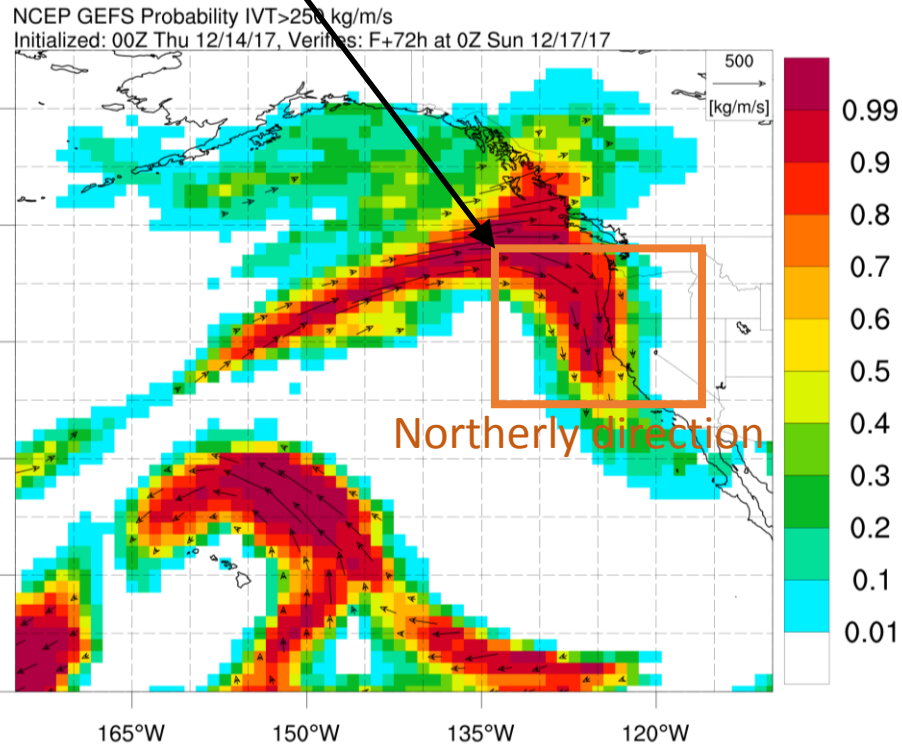
The longer the high pressure and ridging persists over the northeast Pacific and USWC, the more water year 2018 will drop below normal, resulting in a water year much different than WY 2017 (Wettest WY on record; ~182% of average)



- The CW3E AR Landfall Tool currently projects a high probability of IVT magnitudes $>250 \text{ kg m}^{-1} \text{ s}^{-1}$ on 12/16 → 12/17
- Is this an AR that will bring rainfall to the U.S. West Coast?

Ridge Update: 14 December 17

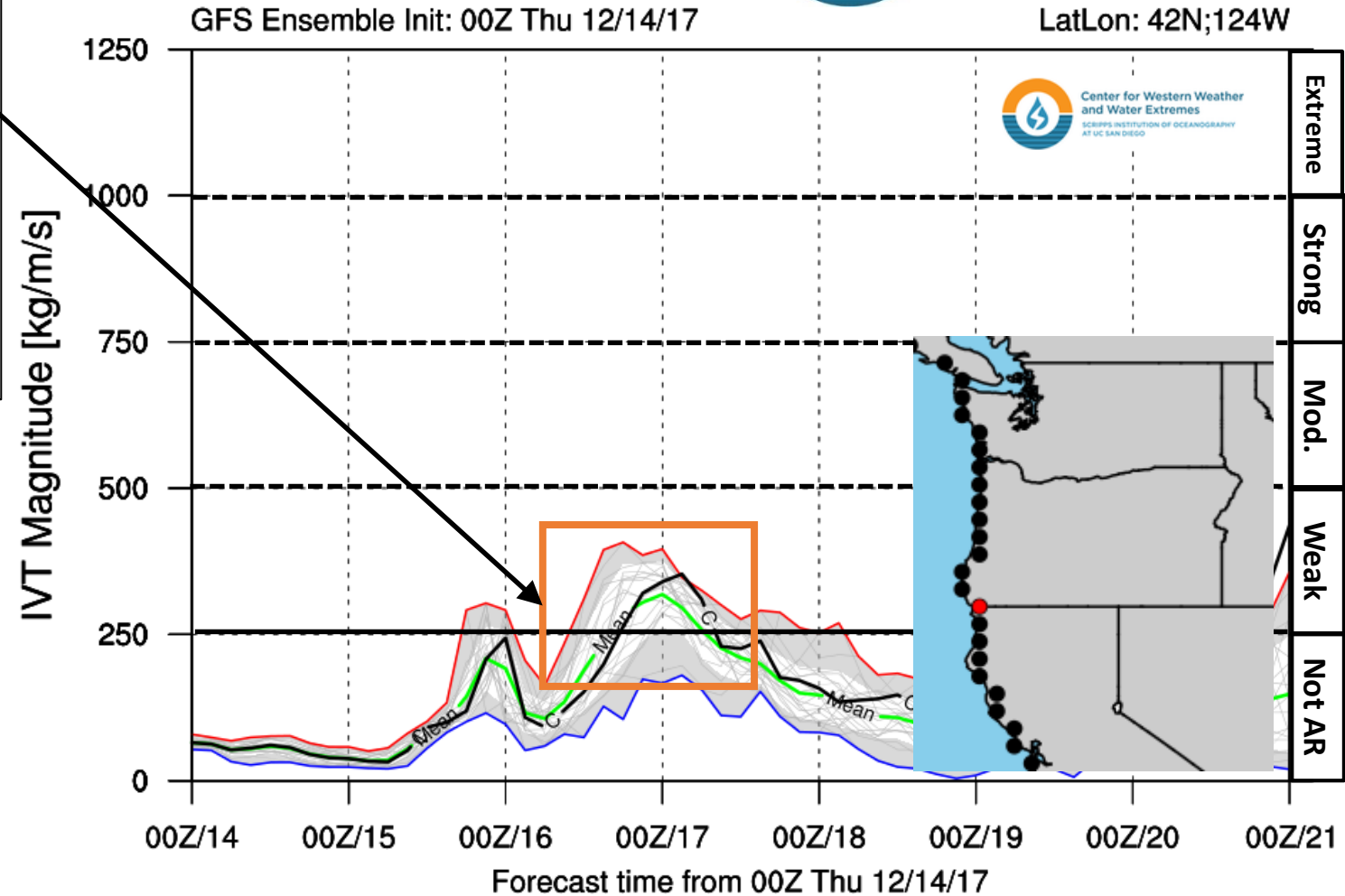
- Plume diagrams illustrate ~12-18 hours of IVT magnitude $>250 \text{ kg m}^{-1} \text{ s}^{-1}$ at 42N
- The probability of IVT $>250 \text{ kg m}^{-1} \text{ s}^{-1}$ map illustrates that this area of enhanced coastal IVT is south of the primary landfalling AR in British Columbia and Vancouver and also associated with a northerly IVT direction
- Northerly IVT directions are unfavorable for precipitation

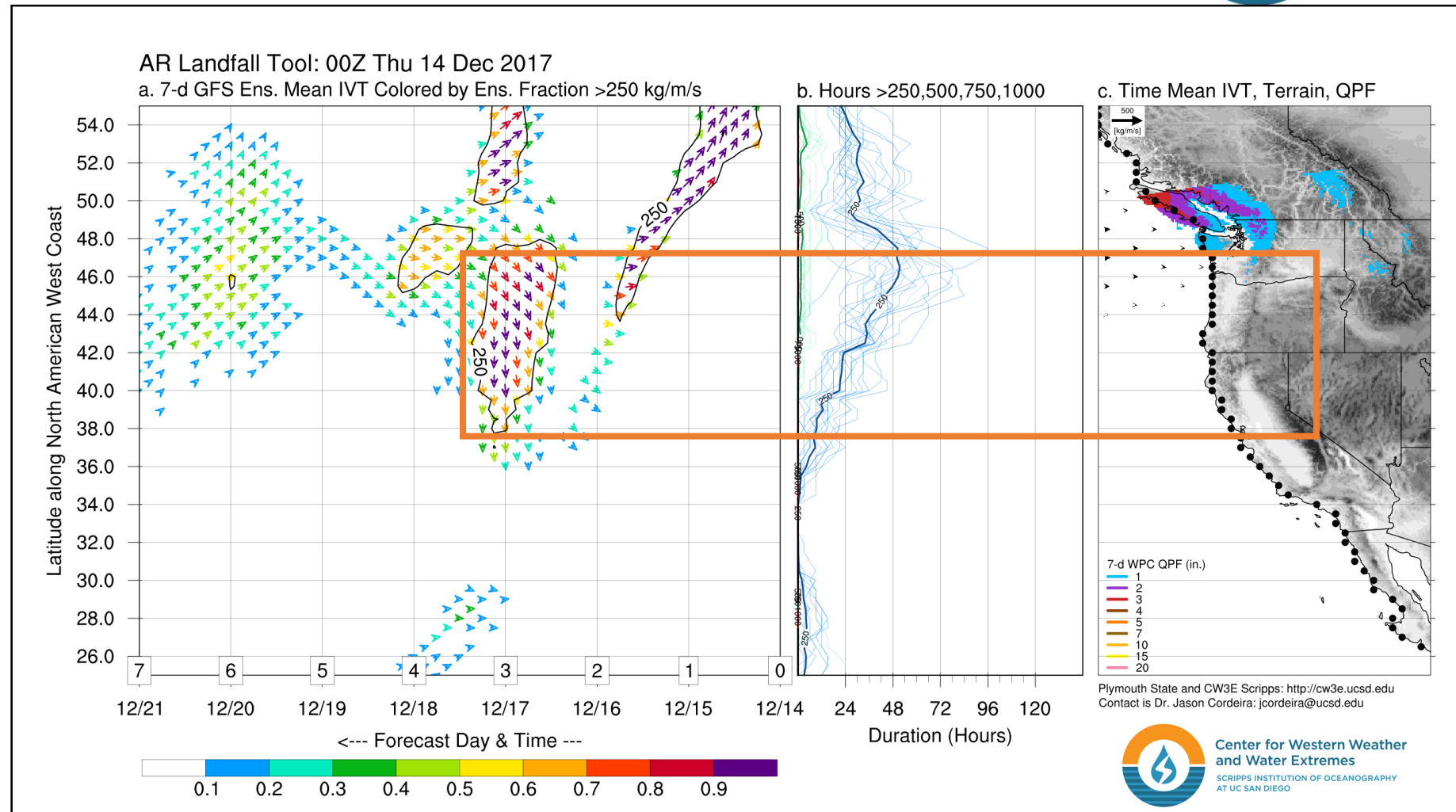


For California DWR's AR Program



Center for Western Weather
and Water Extremes
SCRIPPS INSTITUTION OF OCEANOGRAPHY
AT UC SAN DIEGO





A new tool developed by CW3E illustrates that while IVT magnitudes will exceed $250 \text{ kg m}^{-1} \text{ s}^{-1}$ for >24 hours, the IVT direction will be out of the west-southwest over Vancouver and out of the north along coastal latitudes in Oregon and California → resulting in forecasted precipitation for Vancouver and northwest Washington, and drier conditions farther south.